

The Future of Essex

Progress Review





Part 1: Background and Context

Context

In September 2017 The Essex Vision, “The Future of Essex” was launched. Organisations, partnerships and communities right across Essex contributed to the development of the document. The Vision sets out 7 ambitions that we will work together on as partners, and with our communities, to achieve by 2035.

When the Essex Partnership Board launched ‘The Future of Essex’ it represented a vision for change, an opportunity to give all the many, different communities, groups and businesses of Essex a way to collaborate in planning our future of the County. We worked with communities, groups, organisations and businesses to draw out the strengths of our county and the people that live and work in Essex.

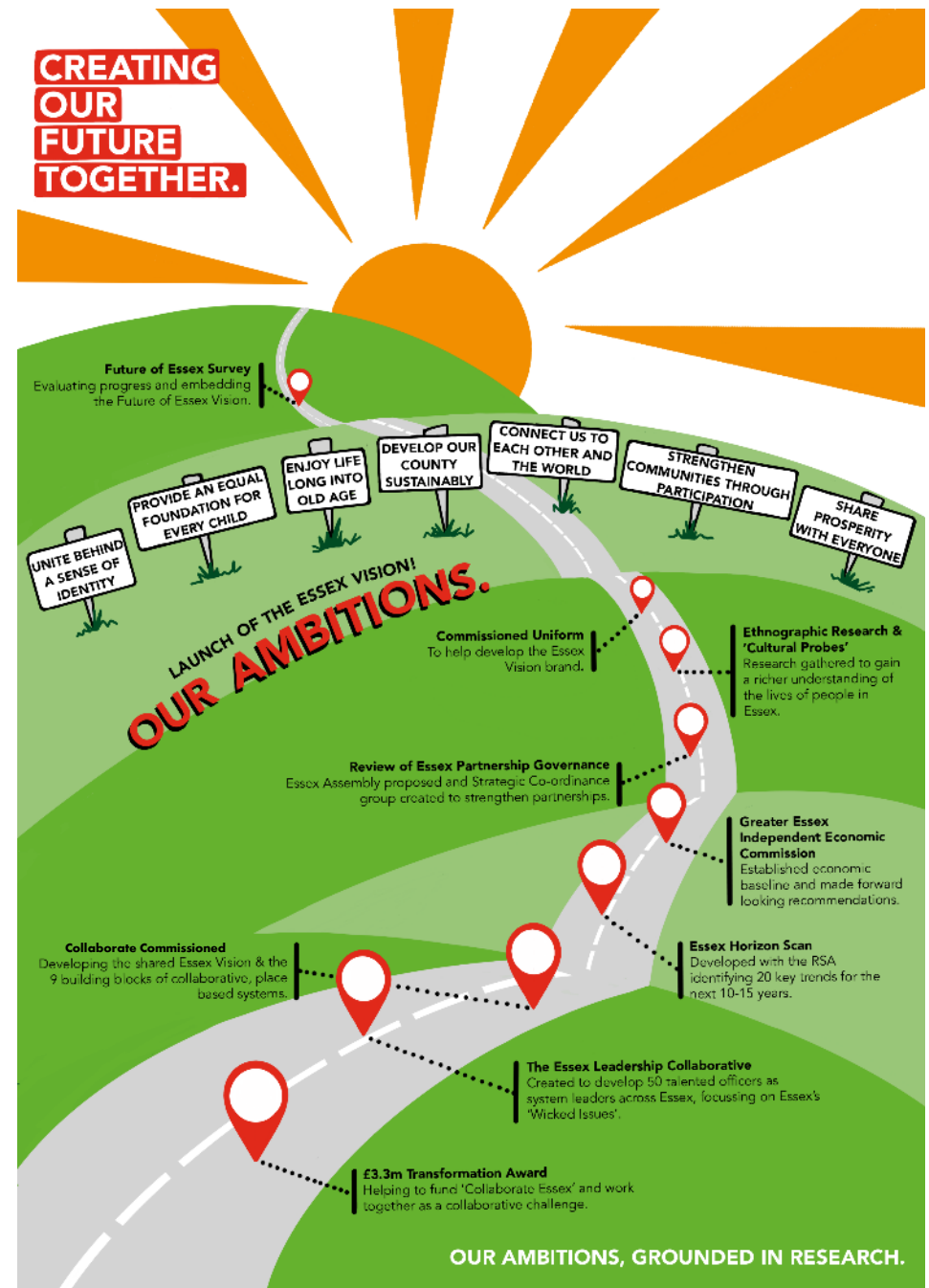
In 2017 we coined the phrase ‘change is unstoppable’. 2 years on from the launch of our shared vision and against a back drop of significant global change, the time feels right to reaffirm the ambitions, celebrate our collective achievements and seek to drive forward progress through a plan of collective action.



Developing our vision

2015 - 2017

- The **Essex Leadership Collaborative** was created to develop 50 talented officers as system leaders across Essex, focusing on Essex's "wicked issues".
- **Collaborate commissioned** - developing the shared Essex Vision & the 9 building blocks of collaborative, place based systems.
- An **Essex Horizon Scan** developed with the RSA identified 20 key trends for Essex in the next 10-15 years.
- **The Greater Essex Independent Economic Commission**, established a baseline of the Essex economy and made a series of forward-looking recommendations.
- **Review of partnership governance** - Essex Assembly proposed and strategic co-ordination group created to strengthen partnerships.
- Commissioned **Uniform** to support with developing the Essex Vision brand (research, surveys, Essex Vision Film etc.).
- **Ethnographic research & cultural probes** - research gathered to gain a richer understanding of the lives of people in Essex.
- **2017** launch of the Essex Vision.



Our Ambitions

- 1. Unite behind a sense of identity*
- 2. Enjoy life long into old age*
- 3. Provide an equal foundation for every child*
- 4. Strengthen communities through participation*
- 5. Develop our county sustainably*
- 6. Connect us to each other and the world*
- 7. Share prosperity with everyone*

Part 2:
Progress Update



Highlights

Over **£320m** investment in Essex as a result of partnership working

Prevented **496 households** from becoming homeless over two years



Over 130 people have taken part in **Leading Greater Essex**

Brought together **56 different partners to deliver holiday hunger projects** to 840 individuals

Provided Mental Health First Aid Training to **8,000 residents**

31 Organisations have signed up to the Essex Faith Covenant

60 ambassadors to help challenge stereotypes of Essex and increase tourism

The fastest **growing Special Constabulary** after the Met. It is currently equal to an additional **150 Officers**

Over 200 people attended the last **Essex Assembly**

As a county **just under 50% of residents have given some form of unpaid help** in the last twelve months

Bringing **superfast broadband** to over **150,000 homes** and businesses



'Just the fact that ecda exists is a product of collaboration and is a great accomplishment'
Alex Flores - University of Essex

Unite behind a sense of identity

Essex's diversity is considered by its residents a significant asset and there are some strong examples of communities coming together behind a common set of values and beliefs such as the **faith covenant**.

However, the make up of Essex is constantly evolving and we need to continue work to ensure residents and local organisations feel part of Essex and have pride in the place they live. For example:

- London and Greater Essex are increasingly interconnected, more people moved to Essex from the Capital than from anywhere else;
- The black and minority ethnic (BME) community in Essex is set to expand from 12% to 20% over the next 20 years.
- New garden communities will create new identities within Essex and attract new residents from outside Essex.

71%

Of BAME residents agree that people from Different backgrounds get on well in their area

31

Organisations have signed up to the Essex Faith Covenant

42%

of Black families live in the most deprived areas

Unite behind a sense of identity

The last 2 years has seen significant strides in bringing communities, public and private sector together behind common goals and a shared sense of identity and purpose. This includes:

- **The launch of Essex Unites** boosting civic pride and connecting communities to each other and organisations across Essex.
- The development and launch of **Essex 2020** celebrating Essex as a place for science and creativity. There are 365 events planned as part of Essex 2020.
- The **people of Essex Instagram** - bringing together a collection of stories from people across the county of Essex, exploring their thoughts and feelings about their sense of identity and the local communities they live in. Involved over 250 people and the stories of over 100 Essex residents and business owners were captured & showcased on the Insta page 'people of Essex'.
- **Leading Greater Essex** - helping create a shared identity, values and behaviours for aspiring systems leaders in Essex. Over 130 have taken part in LGE.



“Essex 2020 is a great example of collaboration and engaging with the community. For Chelmsford it supports our ambition be a place that thrives on arts and culture”
Nick Eveleigh - Chief Executive, Chelmsford

Unite behind a sense of identity

Essex 2020

A year-long, county-wide celebration of science, technology, engineering, arts and mathematics (STEAM). It aims to bring together hundreds of individuals and organisations to shine a light on the County's enterprising past and inspire an even brighter future for science and creativity in Essex

Essex Faith Covenant

The Essex Faith Covenant was developed to strengthen community cohesion by bringing together faith communities and public services. To date 31 organisations have signed up.

Leading Greater Essex

Over the past three years, EPB has commissioned 'Leading Greater Essex' as one-year learning programmes aimed at building system leadership capacity in order to tackle complex and often deep-rooted challenges. To date over 130 people have taken part in the programme.

The People of Essex

Developed to help bring the voice of residents into decision making
It provides collection of stories from people across the county of Essex, exploring their thoughts and feelings about their sense of identity and the local communities they live in.

Enjoy life long into old age



Although there are great examples of collaboration across the system to improve health and care services for residents of Essex there remain inequalities in outcomes and growing demand that means we cannot lose sight of the importance of this ambition.

For residents living in deprived areas of Essex life expectancy can be shortened by up to **8 Years** for a man and **6 years** for a woman

In total, there are **302,941 over 65s in Essex (2018)**.

People with severe and prolonged mental illness will die 15 to 20 years earlier on average.

'In 2020 we need to be working actively to tackle the root causes of problems and not the consequences, thinking holistically about the needs of residents and not treating the symptoms'

Rebecca Jarvis, Essex County Council

In Essex over 19,000 people are currently living with **Dementia** - a figure **set to rise by 34%** over the next ten years



Enjoy life long into old age

Across Essex **new partnerships have formed** to address the health and care needs of our population, with boards such as the **North East Essex Health and Wellbeing Alliance** combining the skills and resources from a range of public sector stakeholders to tackle the issues faced by the community.

At a hyper-local level, we are seeing **Primary Care Networks** are organising themselves, working with communities to better enable change.

Partners are coalescing around the need to address the wider determinants of health, with programmes such as the **local delivery pilot** leading the way on a systems approach to increasing physical activity.

We are looking at new ways to address complex issues such as dementia, encouraging innovation through the challenge prize and adopting new ways of working and the principles of the vision through projects such as **Transforming Adult Social Care (TASC)** placing citizens at the heart of service transformation.

And we are collaborating at both a strategic and operational level to manage demand on our services and continue to support our communities in a time of stretched resources, including plans to address seasonal pressures in social care and the NHS.



Enjoy life long into old age

Heads Up

A £3m secured by a partnership between Enable East and EPUT (Essex Partnership University NHS Trust) leveraging grant funding from ESF and Lottery to work with voluntary sector partners and JobCentre Plus to deliver employment support to people experiencing common mental health problems and improve outcomes relating to wellbeing and employment.



Essex Carers Partnership

Following pan Essex engagement the partnership has a shared purpose and ambition delivering two Carer Summits and alongside community activity that is improving the lives of carers in Essex.

The Pan Essex Dementia Action Alliance (DAA)

was formed as a County body focusing on collaborative action to improve the provision of dementia support in the community. Led by the County group a network of Local DAA groups continues to develop and thrive informing local decision making about services and support for those living with dementia and their families

Essex Men's Shed Network

Delivered across Basildon, Braintree, Castlepoint, Chelmsford, Harlow, Maldon, Rochford and Uttlesford,, the programme creates a safe space for men to come together and share conversation and tools whilst engaging in practical projects.



Challenge Dementia Prize

A £100,000 prize delivered with Alzheimer's Society, PA Consulting and TechUK to identify opportunities to connect those living with dementia to the people and places around them. Awarded in November 2018 to The Wayback to develop new film content for use with their Virtual Reality Reminiscence viewers.

Provide an equal foundation for every child

Yet across Essex there remain inequalities that require a system response.

- Despite the majority of education provision rated good or outstanding **there is still a gap in the achievement of the most vulnerable children** in Essex and their peers.

And trends that we want to change

- Once in school the number of **school exclusions** increased by 92% between 2015 and 2018 which means more children are missing out on a formal education
- Whilst the number of referrals for a social work assessment has gone down there remains a link between poverty and deprivation and children requiring a higher level of support. The rate (per 10,000 of children) on a **Child Protection Plan** in Tendring is **34** compared with an Essex figure of **19**.
- **2/3 Children** and young people across Essex say they have **never received information on mental health**.

In 2019 the number of children reaching a **Good Level of Development** from areas of disadvantage was **20.7%** lower than children from other areas of Essex

22,500

The estimated number of children and young people in Essex have a mental health problem requiring specialist help.

Provide an equal foundation for every child

Partnership working around Children and Families has traditionally been strong in

Essex The strength of collaboration has been demonstrated through the collective response to challenges that have presented over the past two years including;

- Establishment of a County **Violence and Vulnerability Unit** to address 'county lines'; gang related crime and serious youth crime, collective work to highlight and address the risks of changes to legislation around **Permitted Development Rights (PDR)**
- **The Essex Prevents workstream** is bringing together a consortium of Essex housing authorities to lobby London councils on the issue of Permitted Development Rights (PDR) which has resulted in positive outcomes.
- Formation of a **Specialist Children and Young People's Emotional Health and Wellbeing Board** in response to a thematic review on teenage suicide to co-ordinate activity in relation to Emotional Wellbeing and Mental Health (EWMH). Since 2018 the group has mapped over 300 form of provision / resources focused on EWMH across the County.



The number of children achieving a Good Level of Development in Essex has reached 74.4% - a significant increase since 2013.

Provide an equal foundation for every child

Essex Children and Young People's Plan (CYPP)

Work is currently being undertaken to engage children, families and system leaders around a refresh of the County CYPP with a view to building on positive partnership working and moving further from organisational silos.

The **Children and Young People's Emotional Health and Wellbeing Board**

established in response to a thematic review on Teenage Suicide completed by the Essex Safeguarding Children Board. This Board will focus on developing strategic oversight of the issue, including developing an understanding of provision and the gaps within this, strengthening support to schools, co-ordinating the rollout of various mental health programmes in schools and improving the focus on early intervention.

Changing nature of Children's Local Partnerships

There are four Local Children's Partnerships across Essex which take the form of a multi-agency group bringing together stakeholders from across the 0-19 age range. Working within the overall framework of the Children and Young People's Strategic Plan these boards identify issues of local concern and provide partners with a space to review, discuss, investigate and resource locally relevant interventions.

Holiday Hunger

Used a whole system approach, involving 56 different partners, to fund several projects. There were over 3,000 attendances, with 84% being children (under 16 yrs old). Across the 23 projects, 840 different individuals attended at least one session

Provide an equal foundation for every child

Violence and Vulnerability Unit

A unit hosted by Chelmsford City Council working with Essex Police and the Youth Offending Service to improve coordination of interventions and work preventatively with schools and community groups.

Developed in response to the 2018 Essex Violence and Vulnerability (V&V) Framework the work of the Violence and Vulnerability Unit (V&V) is working to align and streamline activities that will raise awareness, act as interventions and support the vulnerable.

The Governance for the Unit is multi-agency with Partnership boards (V&V Round Table and V&V Strategic Executive Group) to provide leadership and strategic direction as well as a multiagency operations group (V&V Operations Board) to join up and drive partnership activity across the county

The type of work supported by the V&V Unit include the **Basildon Hospital Youth Services Project** which is providing an opportunity for Youth Workers to talk to young people presenting at A&E in what they call the 'reachable moment'. Starting in May 2019 the programme has engaged with 150 young people, **71%** of whom signed up for further support once discharged from the hospital. Another example of the work the V&V Unit are doing is **Finding Rhythms** a project in partnership with HMP Chelmsford which is engaging prisoners who are 18+ and have been involved in gangs and county lines. The programme is focused around music from personal experience and integrates a BTEC in Supporting Personal Effectiveness and Employability.

Strengthen communities through participation

From the 1st April 2018 to the 31st March 2019 Essex Police recorded a total of **121,202** crimes (excluding fraud) in the Essex County Council area (not including Southend and Thurrock). This represented an increase of **16.7%** or **17,306** crimes during the same period in 2017/18

Over the last twelve months there has been a **7% increase** in serious violence across the County. This is in part fuelled by a growing gang presence. Some of our most vulnerable citizens are placed at risk of being embedded or exploited into gang activities or County Lines activity.

Just under 50% of residents have given some form of unpaid help in the last twelve months with an increasing number of opportunities being better promoted and advertised through social media.

Only 9%
of residents feel
very safe after
dark



Case Study: Insight led engagement

An insight-driven behaviour change campaign to help prevent the exploitation of young people in Essex is currently in development with 11-16s across the county as part of a multi-agency project led by the Violence and Vulnerability Unit.

Strengthen communities through participation

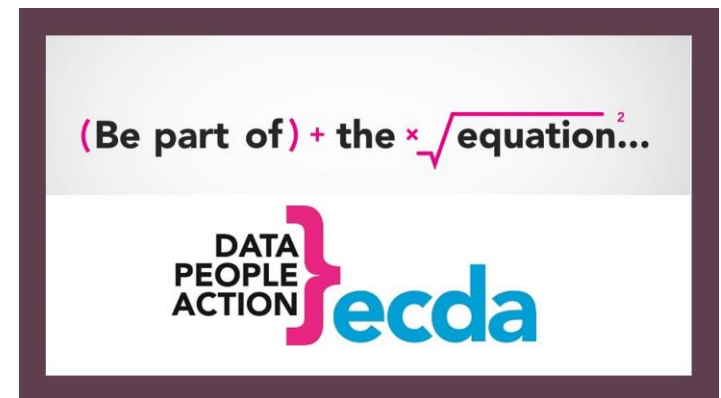
Over the last 2 years we have seen real impact from Essex Partners sponsored projects with Essex Unites driving a change in the way we use **social media reaching out to over 250k people across Essex.**

The **Essex Centre for Data Analysis (ECDA)** has been supporting Essex police to use predictive analytics to prevent crime and keep communities safer. This data and intelligence has made an impact and was used to attract **£664,000** of Home Office funding support the establishment of the **Essex Violence and Vulnerability Unit.**

Further on the prevention front **Essex Police** and the **Office of the Police, Fire and Crime Commissioner** have been working with the private sector including **BT** and **Amazon**, housing developers and **Essex Planning Authorities** to 'design out crime' and give new developments a 21st Century feel through concepts such as **digitally protected neighbourhoods.**

We also have **the fastest growing Special Constabulary after the Met.** It is currently equal to and additional 150 Officers or investment of £5.4m.

Community volunteers supported by Essex Police and Fire deliver Community Speed watch programmes and Home Safety Checks across Essex and the **Safe, Well and Secure Project has seen 1000's of homes visited across Essex.**



Strengthen communities through participation

Office of the Police, Fire and Crime Commissioner working with Public Health to tackle homelessness / substance misuse and the risk of offending

Working with the Ten most vulnerable individuals in each District those who are traditionally high demand individuals, Full Circle staff support the individuals until they are engaged with the relevant support services based on Drug Rehabilitation Requirements, Alcohol Treatment Requirements & Mental Health Treatment Requirements, as well as offering Required Assessments for clients identified through Drug Testing on Arrest. Full Circle's Prison Link staff also track service users across the prison system and work tirelessly to ensure that anyone who is in substance misuse treatment in custody continues to engage in treatment in the community if required.

ARU Chelmsford campus

ARU are working with the community, students and local partners to extend the impact of the University and to extend the influence of the University on the City of Chelmsford. Despite it's proximity to the City Centre there is a collective move to extend the linkages by opening up access to the University Library, eateries, gymnasium and meeting space to encourage greater use by local residents. In addition the university is running a series of Community lectures in 2020.

"When I speak to civic leaders in Chelmsford there is a real sense of pride in the role ARU plays in the community, it is part of the identity of Essex"

James Rolfe Chief - Operating Officer, Anglia Ruskin University

Strengthen communities through participation

The Power of Social Media

Led through the Essex Unites workstream ECC and partners have worked with Hyper-local Facebook groups to encourage local communities to help each other. Since the work started the programme regularly reaches out to over 250k people across Essex. Examples of impact include:

- Support to Facebook Admins to deliver Mental Health First Aid Training to 8,000 residents.
- Creation of a Facebook Befriending Scheme Partnership between GP Practices to support a reduction in loneliness, wellbeing support and to enable patients to get to and from appointments.
- Suicide Prevention Training undertaken with 12,000 Essex residents completing training in one town in under 1 week

A programme of microgrants named the 'Community Chest' has also been trialled with Essex Facebook Administrators to offer small grants for local action with minimum paperwork. Initially £50k was earmarked to kick start micro projects of up to £500.

Community Projects include:

- Anti-bullying Autism Project Witham.
- LGBT Peer Support for group for Children and Young People.
- School Uniform Banks that focus on recycling as a positive as opposed to creating socio economic stigma.
- Wild Meadow Verge Projects.

Communities Creating Change

Utilising a different approach, the Essex Local Deliver Pilot (LDP) has decided to put system change at the heart of all their work and ABCD (Asset Based Community Development) is proving a valuable tool in achieving that

ABCD is a strengths based approach to working with communities and demonstrates that local assets (people, physical assets etc.) are key to ensuring sustainable community development.

The Essex LDP are keen to embed the principles ABCD throughout the system and have helped co-ordinate sessions at the Essex Assembly and a number of workshops for partners delivering training to **over 40 people**

Develop our county sustainably

Housing growth is putting our infrastructure under pressure.

We expect to see a huge programme of house building in Essex over the next twenty years at a time when our infrastructure is already under strain. To keep up with demand Essex needs to build **146,000 homes by 2036**



Case study: Essex Prevents

This partnership programme brought together a number of agencies from across the public and voluntary sectors to develop solutions to Essex's homeless and rough sleeping problems. The partnership **prevented 496 households** from becoming homelessness over two years

"The branding of the Essex Vision has really helped to strengthen connections and build energy to resolve issues"
Dawn French, Chief Executive - Uttlesford

Greater Essex Authorities are required to build **8,980** dwellings / year
Current rate is **5,124** dwellings / year



Develop our county sustainably

This ambition has evolved considerably over the last two years. In Essex we recognise the importance of developing our county sustainably whilst focusing on the environment, climate change and enhancing our green infrastructure. There is much work underway in this area:

- **Chelmsford local plan** - planning for the City's Green Infrastructure is part of a wider planning process led by the Chelmsford Local Plan which establishes the framework for the city's growth.
- **ARU Global Sustainability Unit** - the Global Sustainability Institute (GSI) is committed to playing a key role in developing practical solutions to the challenges facing humanity. Key to this is bringing together the information needed to make decisions, with the people capable of taking action.
- **Basildon regeneration plans** - Basildon Borough Council adopted a Masterplan in 2012 for the Town Centre (£6.2m of investment). £9.7 million was secured from the Housing Infrastructure Fund (HIF) for housing development within the town centre. This includes enabling the formation of a new sustainable transport hub.
- **Essex Forest Initiative** - we are planting at least 375,000 trees over the next five years which will capture 60,000 tonnes of carbon and inspiring other local authorities and community organisations to do the same.



“Tackling climate change is everyone’s responsibility and we must play our part in tackling the biggest threat of the modern day.”
CLlr Simon Walsh

Develop our county sustainably

Goldlay supported internship

Set up in 2018, the scheme is unique in its arrangement, based on a partnership between *L&Q Living, Essex County Council* and *Chelmsford College*, that adds value to the conversion of former Library Headquarters site in Goldlay Gardens, Chelmsford into high spec housing stock. A single block of the accommodation provides supported living for eight young people with learning disabilities. The supported living is run by L&Q Living, who help to develop life skills, awareness and confidence

2020 launch of #LoveEssexNotPlastic

A year-long behaviour change campaign with residents, schools, businesses and local organisations to reduce the use of single-use plastic across Essex.

Housing Infrastructure Fund (HIF)

Application for over £500m investment to enable development of nearly 40,000 new homes in three garden communities in Chelmsford, Colchester and Tendring.

PDR legislation

This work has been facilitated by the Housing Growth Team at ECC and supported by a partnership with the Districts including Harlow, Tendring, Basildon and Epping Forest. Sharing a collective desire to discourage this activity the group entered into dialogue with London Councils and to put in place protocols to; safeguard the individuals being placed in potentially inappropriate and unsafe accommodation with little preparation and to minimise the impact on the wider community and services.

Connect us to each other and the world

Unless we address the skills shortage across Essex productivity will continue to decline

Those without digital skills are more at risk of isolation and loneliness and more likely to be disadvantaged when it comes to accessing information, services and jobs

Case Study: Digital Boomers

Digital Boomers is a ground-breaking collaboration of health and care partners who support older people and adults with disabilities to use digital to live more independently.

In 2018 the Digital Boomers a report was published by ReThinkPartners and Healthwatch Essex on behalf of a broad partnership of public, voluntary and community sector partners from across the County. The report considered how technology can be better used across Essex to promote independent living for older people

The work has been the catalyst for local programmes seeking to connect up communities through digital opportunities



Connect us to each other and the world

In the last two years, there has been significant developments in trying to improve how we improve connectivity across Essex:

- **Connect** is a new project from Maldon and District CVS that has grown out of the Digital Inclusion Partnership in Maldon with support from MOAT Homes and WeCan in West Essex and their Digital Boomers project.
- **Essex Centre for Data Analytics** - The ECDA is a programme designed to create a 'whole-system approach' for integrating data and predicting risk across the region, identifying the contribution all partners make in tackling the issue of vulnerability.
- **National Infrastructure Commission** - Essex County Council and Basildon Borough Council have partnered with the National Infrastructure Commission (NIC), an advisory Commission to HM Treasury, to develop an integrated transport, economic, and housing growth strategy for 2050.
- **Superfast Essex** wins national award for superfast broadband delivery at the national Connected Britain Awards 2019 bringing superfast broadband to over **150,000 homes and businesses** in Essex.



“We are on the cutting edge of how we use technology”

Chief Constable, BJ Harrington

Connect us to each other and the world

Digital Access Project

The joint NE CCG / CBC / TDC Digital Access Project was formed to upskill our joint customers, increase awareness about the benefits of online self-care and ensure efficiencies were made in the Council's through accessing digital processes to allow scarce face to face resources to be directed to vulnerable customers or those with complex needs.

Colchester Institute Construction Campus

The launch of the new Construction campus at Colchester Institute. This facility provides flexible opportunities for current construction workers to upskill and learn different trades.

Digital Innovation Zone (DIZ)

The Essex & Hertfordshire Digital Innovation Zone (DIZ) has been created jointly by organisations from business, health, education, local authorities and the voluntary and community sector. This has helped drive a number of significant pieces of work, such as the cross border Local Full Fire Network (LFFN).

Essex Centre for Data Analytics (ECDA)

ECDA is focused on bringing together, and ethically sharing data, to help generate new insight that will inform how Essex partners plan for the future together.

Share prosperity with everyone

More of Essex is Deprived. There has been a significant increase in the number of areas in Essex that are among the most deprived 10% of areas in England

The productivity of the Essex economy is below the national average and well below others in the south east, depressing the incomes people can earn in the county.

Skills levels differ markedly across the county, with very low levels of skills in parts of the south of the county and along our coastal areas.

Case Study: ARU School of Medicine

First medical school in Essex opening one year ahead of others announced at the same time.

Seeking to address the issue of staff retention in the NHS by growing local medical staff, training them in the local areas with the ambition that people remain connected to the community when they graduate.



Share prosperity with everyone

Within two years there has been considerable activity focused on developing skills across the county, unlocking potential for our citizens and partners and maximising growth for new and existing businesses.

- **Homeless Trailblazers** - the Trailblazers pilot funded ten specialist mentors to support people at risk of homelessness across Greater Essex, working in all its 12 districts/boroughs and two Unitary Authorities. It was managed by Essex County Council, using funding awarded by the Department for Communities and Local Government (DCLG), now the Ministry of Housing, Communities and Local Government (MHCLG).
- **IntoUniversity (iu)** Provides local learning centres where young people are inspired to achieve. At each local centre Into University offers an innovative programme that supports young people from disadvantaged backgrounds to attain either a university place or another chosen aspiration.
- **Skills Fest** - Chelmsford A spin off from the Vision work the event will be repeated in 2020 at Highlands House and will bring together all the local comprehensive schools along with **over 40 exhibitors** and local businesses hosting **over 70 activities** including landscaping, First Aid, and Virtual Reality construction

“The vision created an environment in which we focus on community and system solutions first rather than organisational solutions”

Ian Davidson - Chief Executive, Tendring



Share prosperity with everyone

ARU School of Medicine

It's Essex's first medical school, training the doctors of the future. Construction began in May 2017, and the new £20 million facility opened its doors in September 2018. It features state-of-the-art skills facilities, specialist teaching space, a lecture theatre, simulation rooms and an anatomy suite. The medical school complements our existing facilities, such as the £3.4 million SuperLab.

Jaywick Sands Regeneration

Officers at Essex County Council have been working with a range of partners, including Tendring District Council to develop a new strategic approach to tackling the long-term challenges which exist in the Coastal Village of Jaywick

Healthier, wealthier children

The Healthier Wealthier Children project is focussed on addressing childhood and family poverty, and in turn improving long term health and wellbeing outcomes for children and families. Based on an approach shown to be successful in Glasgow, the HWC project seeks to ensure that families are supported in claiming all financial support they are entitled to, reducing debt and have access to financial and debt management advice to reduce childhood poverty in Essex. We are currently working with local CABs in Essex and the Essex 0-19s service to develop our local approach to referral pathways and strengthening the relationship between financial advice and support service and our children's services, with a focus on upskilling staff such as health visitors to identify where families may benefit from support in claiming all financial support to which they are entitled.



Part 2: Next Steps

Actions

1. Develop and maintain a database of key partnership projects to help share good practice
2. Develop a system scorecard to support delivery of our shared ambitions and share learning across the system
3. Further develop LGE to incorporate real work in the system that supports delivery of the vision
4. Continue to promote and embed the vision across the system

“The vision provides us with the opportunity to move from transactional relationships to collaborative partnerships. Projects such as the LDP have shown the value of partners creating, delivering and learning together.”

Jason Fergus, Head of Active Essex



Areas of focus for system leaders

- Ensuring every part of Essex has the policies and land supply in place to deliver new & affordable homes.
- Working together to drive up productivity in Essex to reduce the economic challenges
- Working together to reduce the impact of deprivation so that where you live no longer dictates your social mobility
- Coming together to tackle climate change
- Tackling the wider determinants of health systematically to enhance prevention and reduce demand on acute services

“Trust and relationships is how we get things done”

Tracy Rudling, CEO Community 360

“The vision can’t be top down. How we achieve the ambitions must also be built up from the communities we serve.”

Andy Wright, Chief Executive Braintree

